



workspace

The Home of Commercial Interior Design in the Middle East

INSPIRING CREATIVE ORIGINAL

2015 POST SHOW REPORT

workspace-index.com

Co-located with:



WORKSPACE AT INDEX 2015 IN NUMBERS.

VISITOR ATTENDANCE BREAKDOWN

16,800*
TOTAL ATTENDANCE



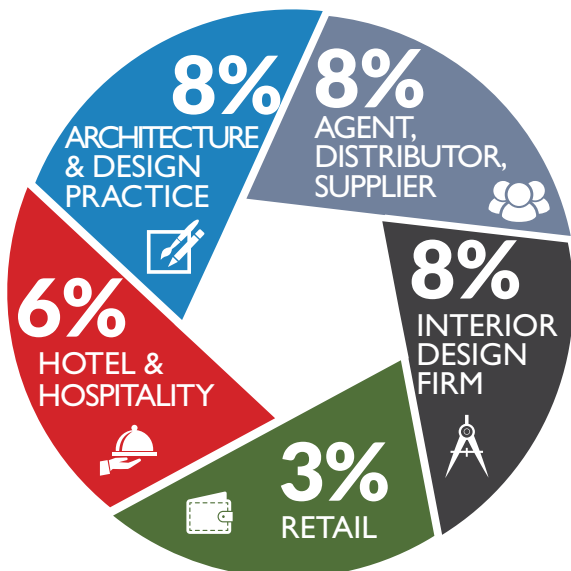
10,479**
UNIQUE VISITORS

4,115
REVISITS



135
EXHIBITING COMPANIES

TOP 5 VISITORS BY BUSINESS ACTIVITY



VISITOR PURCHASING POWER

60%
OF VISITORS ARE EITHER A DECISION MAKER OR PURCHASER/BUYER

59%
OF VISITORS HAVE PURCHASING AUTHORITY

22%
OF VISITORS HAVE A PURCHASING AUTHORITY IN EXCESS OF \$1M

3%
OF VISITORS HAVE A PURCHASING AUTHORITY IN EXCESS OF \$100M

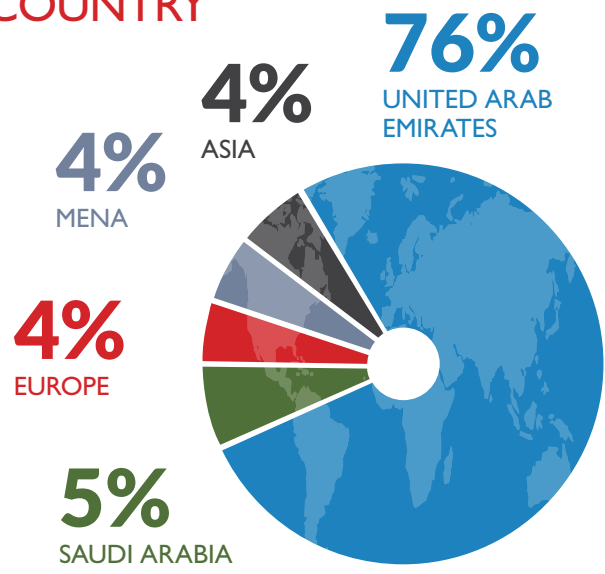
\$1.6bn
IN NEW BUSINESS OVER THE NEXT 12 MONTHS IS EXPECTED TO BE GENERATED AS A RESULT OF WORKSPACE

\$46,700
IS THE AMOUNT ON AVERAGE EACH VISITOR SPENDS ONSITE OVER 4 DAYS

WORKSPACE AT INDEX 2015 BRANDS + EXHIBITORS

workspace at INDEX 2015 featured over 135 suppliers from 20 countries. The exhibition was a showcase of world-leading commercial interior brands and products. Some of those that took part included: Arthur Holm, C & P Moebelsysteme, Sedus Stoll, Milani, Interstuhl, Allsteel, Louis Poulsen, Zuco, Dauphin, Diemme, Guialmi.

TOP 5 VISITORS BY COUNTRY



* This figure includes unique visitors, cross-overs, revisits and exhibitors.
** This figure includes unique visitors, unique cross-overs (visitor + exhibitor)



Exhibitor: Montana



Exhibitor: Inclass



Exhibitor: Shaw Contract Group



Exhibitor: Abstracta



Exhibitor: Gibca

To discuss how you can align your brand with the GCC's premier commercial interior design event, please contact:

Rebecca Lockwood, Event Manager

E: sales@workspace-index.com

T: +971 (0) 4 445 3624

2016 STAND RATES:

Regular space only:.....	\$428 per sqm
Boulevard space only:.....	\$448 per sqm
Traditional shell scheme:	\$510 per sqm
Boulevard traditional shell scheme:.....	\$536 per sqm
Premium shell scheme:	\$561 per sqm
Boulevard premium shell scheme:.....	\$577 per sqm

workspace-index.com



23 - 26 MAY 2016

DUBAI WORLD TRADE CENTRE
Za'abeel Hall 2 & 3

Co-located with:



Organised by:

